

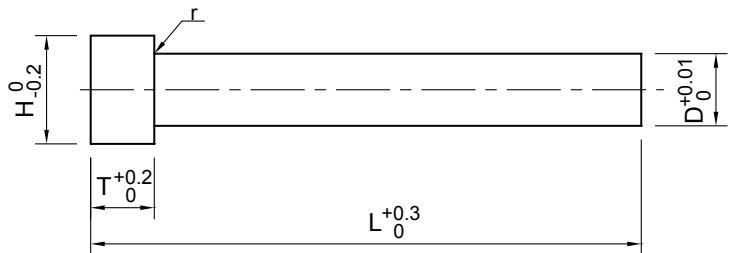
Carbide punch-WBP type

鎢鋼沖頭WBP型



材質 Material: KG5

硬度 Hardness: HRA88°~89°



Price: (RMB)

D	H	T	r	L				
				50	60	70	80	90
0.8~0.9	2.0	5	Max0.3	185	210	240		
1.0~1.2	2.0			160	170	200	260	
1.3~1.5	3.0			160	170	200	260	
1.6~2.2	3.0			160	170	200	260	
2.3~2.5	4.0			168	180	210	270	
2.6~2.9	4.0			168	180	210	270	
3.0~3.5	5.0			180	200	230	300	350
3.6~4.5	6.0			200	220	250	320	380
4.6~5.5	7.0		220	240	270	350	430	
5.6~6.5	8.0		270	300	340	400	460	
6.6~7.5	9.0		320	350	390	460	530	
7.6~7.9	10.0		410	450	500	600	700	
8.0~8.5	10.0		410	450	500	600	700	
8.6~9.5	11.0		440	490	550	660	770	
9.6~9.9	12.0		460	510	580	700	820	
10.0~11.5	13.0		500	580	665	750	850	
11.6~12.0	14.0	565	672	760	880	980		

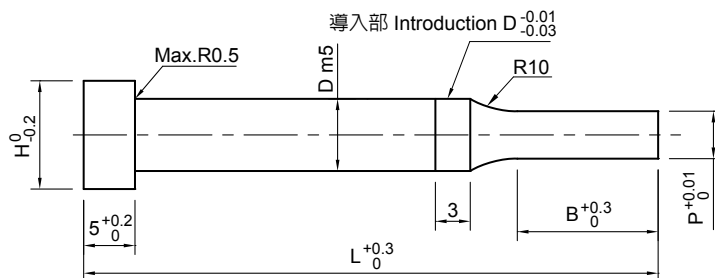
Carbide punch-WAP type

鎢鋼沖頭WAP型



材質 Material: KG5

硬度 Hardness: HRA88°~89°



Price: (RMB)

D	H	P	B	L			
				40	50	60	80
3.0	5.0	1.0~2.99	8~19	240	270	300	360
4.0	7.0	1.0~3.99		280	315	360	480
5.0	8.0	2.0~4.99		330	360	420	540
6.0	9.0	2.0~5.99		375	435	525	670
8.0	11.0	3.0~7.99		465	555	690	885
10.0	13.0	3.0~9.99		540	720	870	1110
13.0	16.0	6.0~12.99		915	1020	1125	1358
16.0	19.0	10.0~15.99		1150	1320	1580	2070

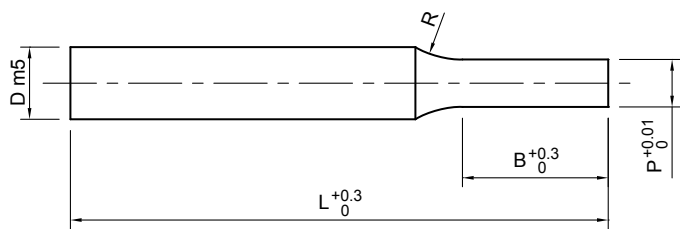
Carbide punch-WH type

鎢鋼沖頭WH型



材質 Material: KG5

硬度 Hardness: HRA88°~89°



P與B的關係	P	0.5~1.0	1.1~2.0	2.1~3.0	3.1~4.0	4.1~6.0	6.1~12.0
Relation between P and B	B	4	6	8	10	12	15

Price: (RMB)

D	P	R	L				
			50	60	70	80	90
1.0	0.5~0.9	5	80	90	112	167	
1.5	0.5~1.4		85	96	120	180	
2.0	0.5~1.9		85	96	120	180	
2.5	1.0~2.4		83	94	119	164	
3.0	1.0~2.9		87	98	124	170	230
3.5	1.0~3.4		95	107	134	184	248
4.0	1.0~3.9		103	116	145	198	266
4.5	1.0~4.4		118	132	162	200	268
5.0	2.0~4.9		129	144	177	217	290
5.5	2.0~5.4		140	158	188	235	304
6.0	2.0~5.9		152	171	203	253	327
6.5	2.0~6.4		188	207	242	297	378
7.0	2.0~6.9	10	202	223	261	319	406
7.5	2.0~7.4		217	240	282	345	436
8.0	3.0~7.9		232	257	301	367	466
8.5	3.0~8.4		282	311	340	407	488
9.0	3.0~8.9		299	331	363	417	500
9.5	3.0~9.4		317	352	387	445	533
10.0	4.0~9.9		337	375	414	475	570
10.5	4.0~10.4		356	398	439	505	605
11.0	4.0~10.9		377	423	468	540	645
11.5	4.0~11.4		397	446	495	570	682
12.0	4.0~11.9		424	475	525	600	720

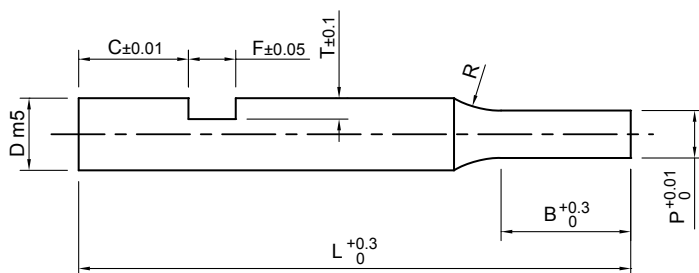
Carbide punch-WHK type

鎢鋼沖頭WHK型



材質 Material: KG5

硬度 Hardness: HRA88°~89°



P與B的關係	P	0.5~1.0	1.1~2.0	2.1~3.0	3.1~4.0	4.1~6.0	6.1~12.0
Relation between P and B	B	4	6	8	10	12	15

Price: (RMB)

D	P	R	L				
			50	60	70	80	90
1.0	0.5~0.9	5	130	140	162	218	
1.5	0.5~1.4		135	146	170	230	
2.0	0.5~1.9		126	137	160	205	
2.5	1.0~2.4		133	144	170	215	
3.0	1.0~2.9		137	148	175	220	280
3.5	1.0~3.4		145	157	185	235	300
4.0	1.0~3.9		153	166	195	250	316
4.5	1.0~4.4		170	182	215	268	320
5.0	2.0~4.9		180	195	230	270	340
5.5	2.0~5.4		190	208	240	285	355
6.0	2.0~5.9		203	220	255	303	378
6.5	2.0~6.4	10	240	258	295	350	430
7.0	2.0~6.9		252	275	312	370	456
7.5	2.0~7.4		267	290	332	395	486
8.0	3.0~7.9		282	307	351	417	516
8.5	3.0~8.4		332	361	390	457	538
9.0	3.0~8.9		350	382	415	467	550
9.5	3.0~9.4		367	402	437	495	585
10.0	4.0~9.9		390	425	465	525	620
10.5	4.0~10.4		406	450	490	556	655
11.0	4.0~10.9		430	475	520	585	695
11.5	4.0~11.4		445	496	545	620	735
12.0	4.0~11.9	475	525	575	652	768	

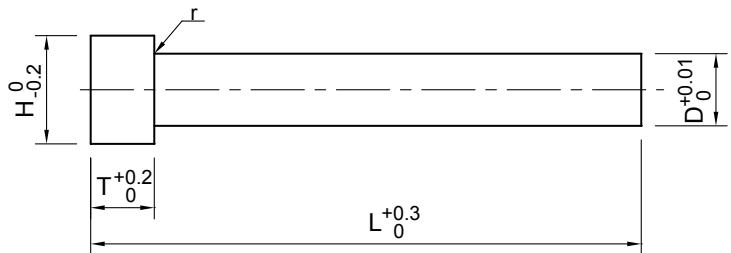
Carbide pilot punch-WBPP type

鎢鋼弓|導沖頭WBPP型



材質 Material: KG5

硬度 Hardness: HRA88°~89°



Price: (RMB)

D	H	T	r	L				
				40	50	60	70	80
0.80~1.00	2.0	5	Max0.3	230	240	270	380	
1.01~1.29	2.0			210	220	250	320	
1.30~1.59	3.0			210	220	250	320	
1.60~2.29	3.0			210	220	240	285	
2.30~2.99	4.0			185	190	220	260	
3.00~3.59	5.0			190	200	230	270	320
3.60~4.59	6.0		Max0.5	220	240	270	310	370
4.60~5.59	7.0			270	290	320	370	420
5.60~6.59	8.0			320	350	390	450	510
6.60~7.59	9.0			370	400	440	510	580
7.60~8.59	10.0			460	500	550	650	750
8.60~9.59	11.0			500	550	610	720	830
9.60~9.99	12.0	520	570	640	760	880		

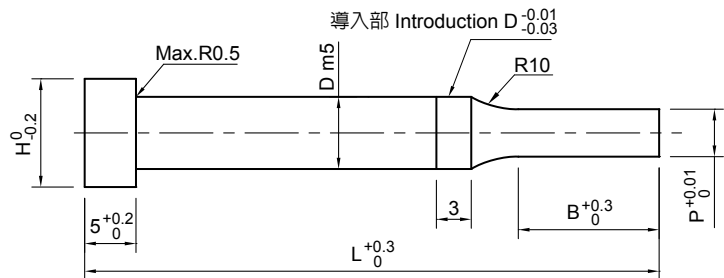
Carbide pilot punch-WAPP type

鎢鋼弓|導沖頭WAPP型



材質 Material: KG5

硬度 Hardness: HRA88°~89°



P與B的關係	P	0.5~1.0	1.1~2.0	2.1~3.0	3.1~4.0	4.1~6.0	6.1~12.0
Relation between P and B	B	4	6	8	10	12	15

Price: (RMB)

D	H	P	T	r	R	L					
						40	50	60	70	80	
1.0	2.0	0.5~0.9	5	Max0.3	5	280	290	320	380		
1.5	3.0	0.5~1.4				280	290	320	380		
2.0	3.0	0.8~1.9				280	290	320	380		
2.5	4.0	0.8~2.4				235	245	270	310		
3.0	5.0	1.0~2.9				235	245	270	310	350	
3.5	5.0	1.0~3.4		Max0.5		10	260	270	300	320	360
4.0	6.0	1.0~3.9					280	295	315	360	430
4.5	6.0	1.0~4.4					280	295	315	360	430
5.0	7.0	2.0~4.9					310	330	360	410	500
6.0	8.0	2.0~5.9					360	390	430	490	580
8.0	10.0	3.0~7.9			530	570	620	720	760		
10.0	13.0	4.0~9.9			600	650	720	780	850		

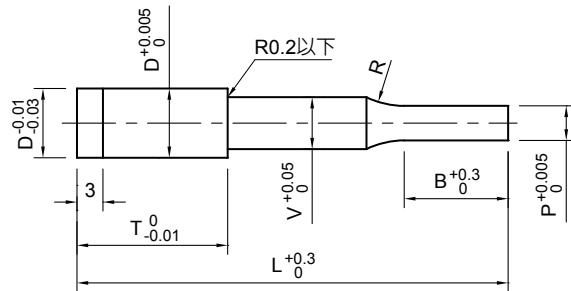
Carbide punch-W1 type

鎢鋼沖頭W1型



材質 Material: KG5

硬度 Hardness: HRA88°~89°



Price: (RMB)

D	V	P	T				B	R	L			
									40	50	60	70
3	2	0.5~0.8	13	16	20	25	2~6	2~3	200	218	235	265
3.5	2	0.5~0.8	13	16	20	25	2~6	10	210	228	245	278
4	2	1.0~3.0	13	16	20	25	2~13		223	240	265	294
5	3	1.5~4.0	13	16	20	25	2~13		256	280	300	330
6	4	1.5~4.0	13	16	20	25	2~13		290	312	345	372
8	6	2.0~6.0	13	16	20	25	2~13		375	400	450	525
10	8	2.5~8.0	13	16	20	25	2~13		475	540	590	670

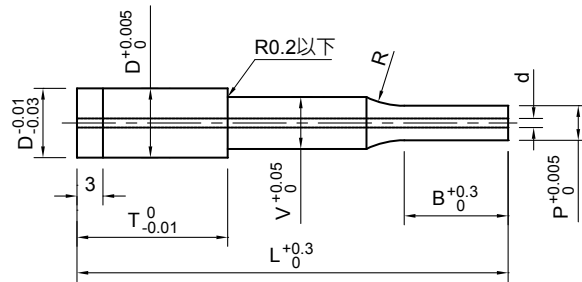
Carbide punch-W2 type

鎢鋼沖頭W2型



材質 Material: KG5

硬度 Hardness: HRA88°~89°



Price: (RMB)

D	V	P	T				B	d	R	L			
										40	50	60	70
5	3	1.0~3.0	13	16	20	25	2~8	0.4	10	350	370	420	450
6	4	1.5~4.0	13	16	20	25	2~13	0.5		380	405	465	495
8	6	2.0~6.0	13	16	20	25	2~13	0.8		465	500	567	630
10	8	3.0~8.0	13	16	20	25	2~13	0.8		565	630	715	790

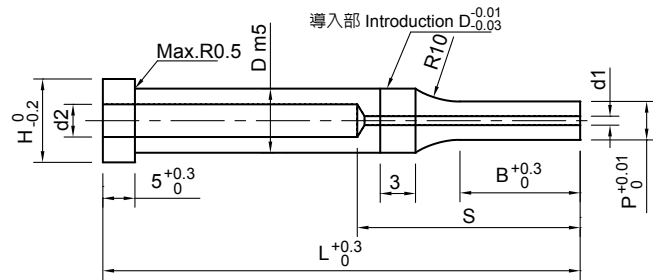
Carbide punch-W3 type

鎢鋼沖頭W3型



材質 Material: KG5

硬度 Hardness: HRA88°~89°



Price: (RMB)

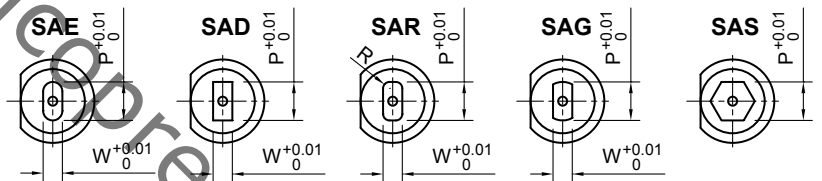
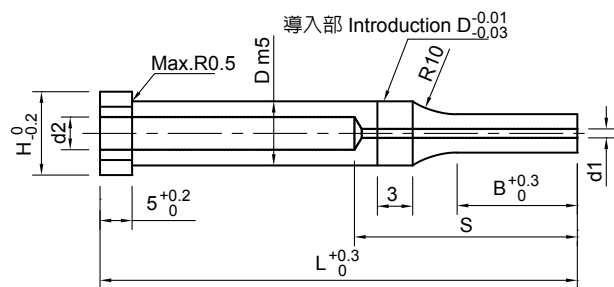
D	H	P	B	d1	S	d2	L			
							40	50	60	70
4	7	1.0~3.99	8~19	0.5	20	1.2	356	390	435	570
5	8	2.0~4.99		0.8		2.1	405	435	495	630
6	9	2.0~5.99		2.6		450	510	585	760	
8	11	3.0~7.99		1.2	27	3.4	540	630	762	980
10	13	3.0~9.99		1.6	28	4.4	620	800	950	1200
13	16	6.0~12.99		1.9			990	1110	1200	1450
16	19	10.0~15.99		2.9			36	1215	1400	1650

Carbide punch-W4 type

鎢鋼沖頭W4型

材質 Material: KG5

硬度 Hardness: HRA88°~89°



Price: (RMB)

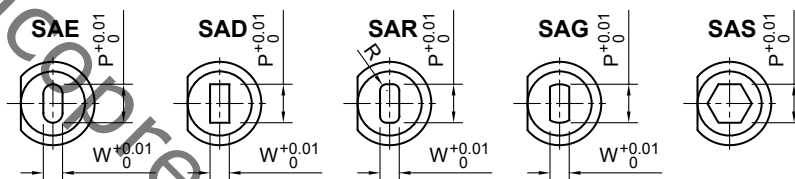
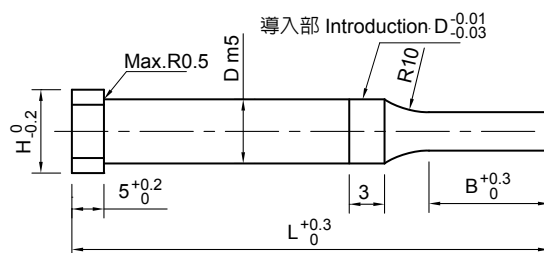
D	H	B	d1	S	d2	L	SAE	SAD	SAR	SAG	SAS
4	7	8~19	0.5	20	1.2	80	700	670	840	650	700
5	8		0.8		2.1		745	722	895	705	745
6	9		2.6		850		822	996	806	850	
8	11		1.2	27	3.4		1080	1040	1240	1040	1080
10	13		1.6	28	4.4		1270	1230	1440	1210	1270
13	16		1.9				1500	1470	1670	1520	1500
16	19		2.9	36			2210	2180	2380	2230	2210

Carbide punch-W5 type

鎢鋼沖頭W5型

材質 Material: KG5

硬度 Hardness: HRA88°~89°



Price: (RMB)

D	H	B	L	SAE	SAD	SAR	SAG	SAS
4	7	8~19	80	600	580	750	560	600
5	8			652	630	802	612	652
6	9			756	730	906	716	756
8	11			985	945	1145	945	985
10	13			1180	1140	1330	1120	1180
13	16			1408	1378	1578	1428	1418
16	19			2120	2090	2290	1650	2120

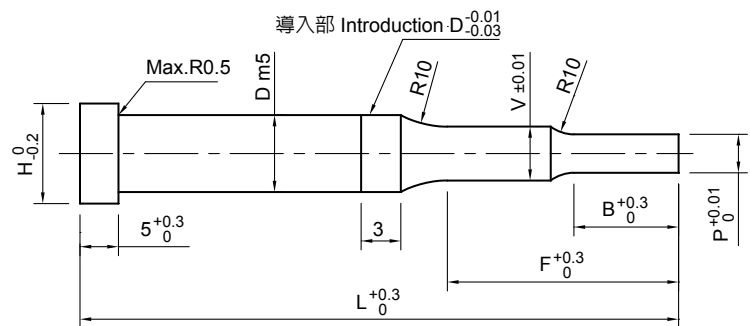
Carbide punch-W6 type

鎢鋼沖頭W6型



材質 Material: KG5

硬度 Hardness: HRA88°~89°



Price: (RMB)

D	H	P	B	L			
				40	50	60	70
3	5	0.9~2.98	2.0~19.0	300	330	360	420
4	7	0.9~3.98	2.0~30.0	340	375	420	540
5	8	1.0~4.98	2.0~40.0	390	426	480	600
6	9	1.0~5.98	2.0~40.0	435	495	585	730
8	11	1.5~7.98	2.0~45.0	525	615	750	945
10	13	1.5~9.98	2.0~45.0	600	780	950	1120
13	16	3.0~12.98	2.0~45.0	980	1100	1200	1350
16	19	4.0~15.98	2.0~45.0	1250	1415	1650	2150
V,F尺寸客戶自定				Sige V and F depend on customer's demand			

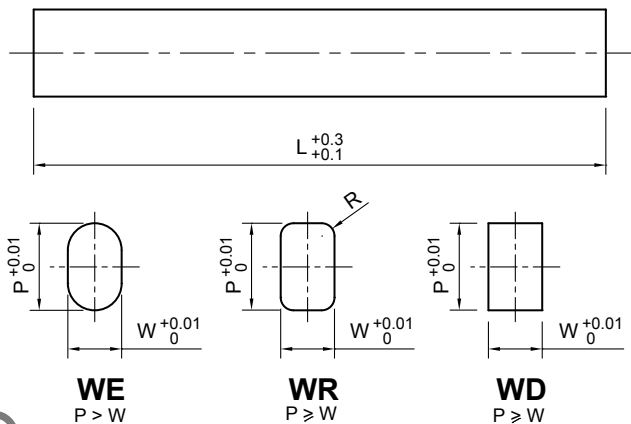
Carbide square punch-W8 type

鎢鋼方形沖頭W8型



材質 Material: KG5

硬度 Hardness: HRA88°~89°



Price: (RMB)

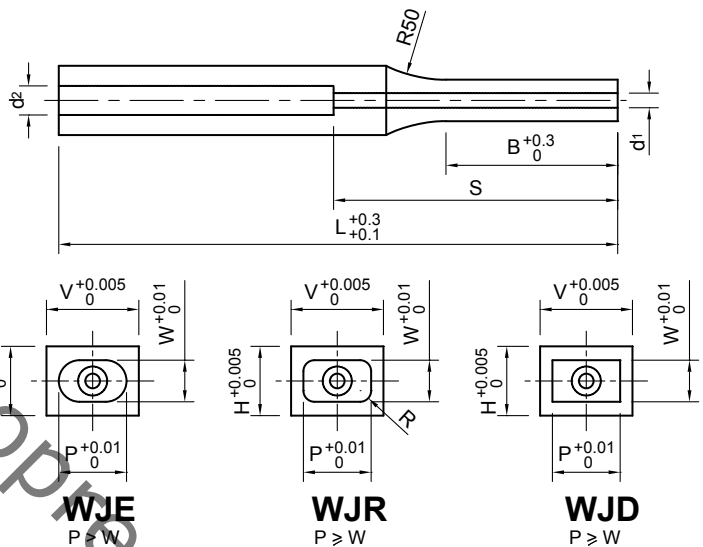
型號	L	W	P								
			2.0~2.9	3.0~3.9	4.0~4.9	5.0~5.9	6.0~7.9	8.0~9.9	10.0~12.9	13.0~15.9	16.0~20.0
WE	60	2.0~2.9	430	432	496	470	480	490	502	515	
		3.0~3.9		400	400	475	486	498	516	538	556
		4.0~4.9			400	480	495	510	516	556	580
		5.0~5.9				495	505	520	547	570	600
		6.0~7.9					530	550	578	608	645
		8.0~9.9						570	605	640	690
		10.0~12.9							662	708	765
		13.0~15.9								760	830
		16.0~20.0									925
WR	60	2.0~2.9	430	430	430	470	478	492	510	516	
		3.0~3.9		392	392	478	486	500	520	530	560
		4.0~4.9			396	485	498	512	545	556	580
		5.0~5.9				496	510	525	550	570	600
		6.0~7.9					530	550	560	610	650
		8.0~9.9						575	610	645	692
		10.0~12.9							665	710	770
		13.0~15.9								760	835
		16.0~20.0									925
WR	60	2.0~2.9	210	210	230	203	215	228	237	245	
		3.0~3.9		190	190	210	223	230	252	265	286
		4.0~4.9			196	218	230	242	265	282	310
		5.0~5.9				226	240	252	280	300	328
		6.0~7.9					262	282	315	335	370
		8.0~9.9						300	325	365	410
		10.0~12.9							385	430	485
		13.0~15.9								476	545
		16.0~20.0									630

Carbide square punch-W9 type

鎢鋼方形沖頭W9型

材質 Material: KG5

硬度 Hardness: HRA88°~89°



Price: (RMB)

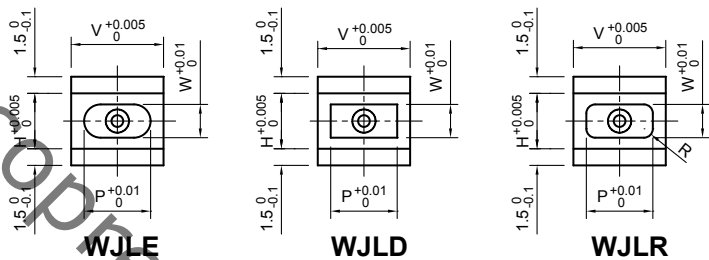
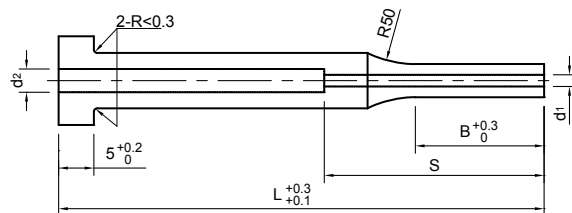
H	V	W	P	B	d1	d2	S	L	WE	WD	WR	
5.0~6.0	5.0~6.0	2.5	3.0	13	0.8	2.6	20	60	930	685	950	
	6.1~8.0		3.0						980	730	992	
	8.1~10.0		4.0						1000	730	1000	
	10.1~13.0		5.0						1120	850	1140	
	13.1~16.0		7.0						1185	895	1200	
	16.1~20.0		8.0						1320	900	1340	
6.1~8.0	6.1~8.0	2.5	3.0	19	1.2	3.4	27		1020	765	1040	
	8.1~10.0		4.0						1045	786	1062	
	10.1~13.0		5.0						1180	892	1185	
	13.1~16.0		7.0						1280	970	1283	
	16.1~20.0		8.0						1420	1100	1350	
8.1~10.0	8.1~10.0	3.0	4.0		25	1.6	4.4		28	1065	820	1090
	10.1~13.0		5.0					1230		950	1245	
	13.1~16.0		7.0					1315		1030	1330	
	16.1~20.0		8.0					1482		1165	1425	
10.1~13.0	10.1~13.0	3.5	5.0			25	1.9	4.4	36	1315	1050	1328
	13.1~16.0		7.0							1420	1130	1435
	16.1~20.0		8.0							1615	1400	1500
13.1~16.0	13.1~16.0	4.5	7.0	25			2.9	36	36	1500	1205	1520
	16.1~20.0		8.0		1730					1410	1643	
16.1~20.0	16.1~20.0	5.0	8.0	25	2.9		36	36	1865	1550	1742	

Carbide square punch-W10 type

鎢鋼方形沖頭W10型

材質 Material: KG5

硬度 Hardness: HRA88°~89°



Price: (RMB)

H	V	W	P	B	d1	d2	S	L	WE	WD	WR
5	5	2.5	2.5	13	0.8	2.1	20	60	785	615	795
	6		3.0						812	642	823
	8		3.0						845	668	852
	10		4.0						856	680	870
	13		5.0						883	705	895
	16		7.0						925	735	940
6	6	2.5	3.0	19	1.2	3.4	27	60	820	645	835
	8		3.0						856	680	864
	10		4.0						870	695	880
	13		5.0						900	715	905
	16		7.0						950	752	958
8	8	2.5	3.0	19	1.2	3.4	27	60	885	705	895
	10		4.0						900	723	920
	13		5.0						940	758	945
	16		7.0						995	806	1020
10	10	3.0	4.0	19	1.6	4.4	28	60	930	745	940
	13		5.0						980	796	995
	16		7.0						1050	842	1050
13	13	3.5	5.0	25	1.9	4.4	36	60	1050	845	1050
	16		7.0						1100	915	1120
16	16	4.5	7.0	25	2.9	4.4	36	60	1180	976	1195